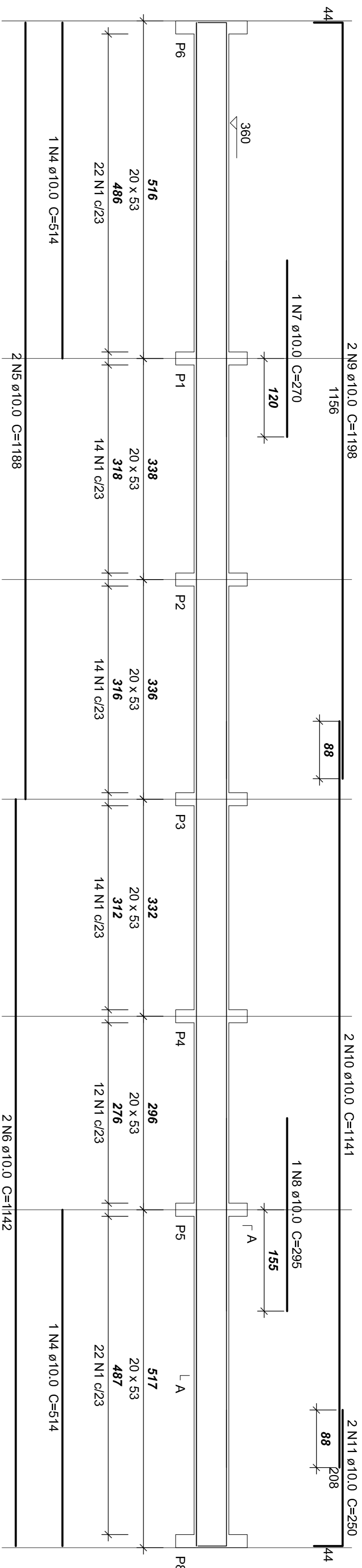


V1 (20 x 53)

1:50



Relação do Aço Vigas da Cobertura

ACO	N	DIAM	Q	UNIT (cm)	COTTON (cm)
CA60	1	5.0	222	132	30636
	2	5.0	31	118	34472
	3	5.0	68	128	8704
	4	10.0	52	154	1028
	5	10.0	2	1188	2376
	6	10.0	2	1188	2376
	7	10.0	1	200	270
	8	10.0	1	200	270
	9	10.0	2	1188	2366
	10	10.0	2	1141	2282
CA50	11	10.0	2	250	500
	12	10.0	1	606	606
	13	10.0	2	1069	2198
	14	10.0	2	1023	2046
	15	10.0	2	856	1712
	16	10.0	2	939	1878
	17	10.0	1	300	300
	18	10.0	3	665	2055
	19	10.0	2	741	1462
	20	10.0	2	1011	2022
	21	10.0	2	1020	2020
	22	10.0	2	1198	2200
	23	10.0	1	335	1914
	24	12.5	1	335	335
	25	12.5	1	345	690
	26	12.5	1	315	315
	27	12.5	2	1197	2394
	28	12.5	2	1063	2126

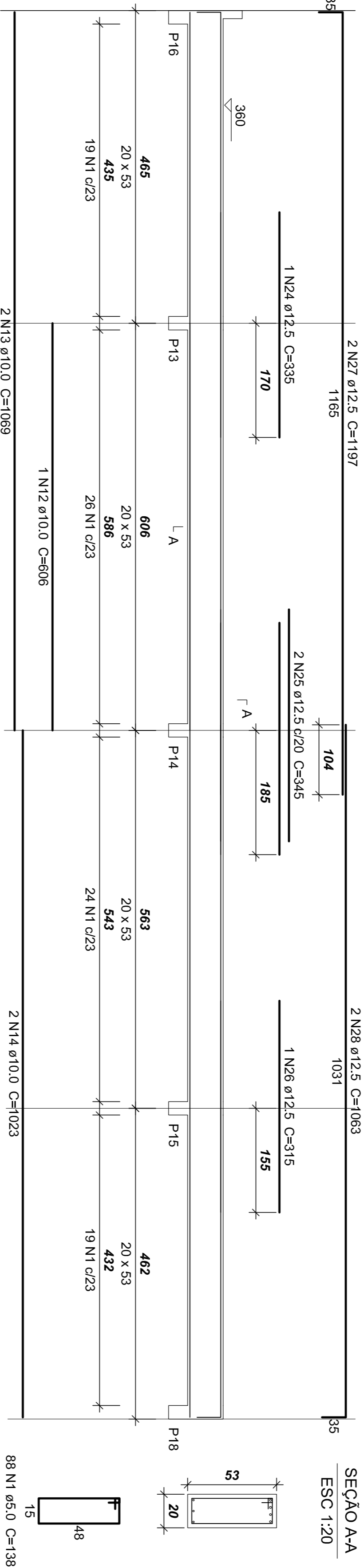
Resumo do Aço

AÇO	DIAM	C.TOTAL (m)	PESO (kg)
CA50	10.0	320	197.3
	12.5	58.6	56.5
CA60	5.0	428.2	66
PESO TOTAL			
CA50	253.7		
CA60	66		

Vol. de concreto total (C-20) = 7.77 m³
Área de forma total = 98.06 m²

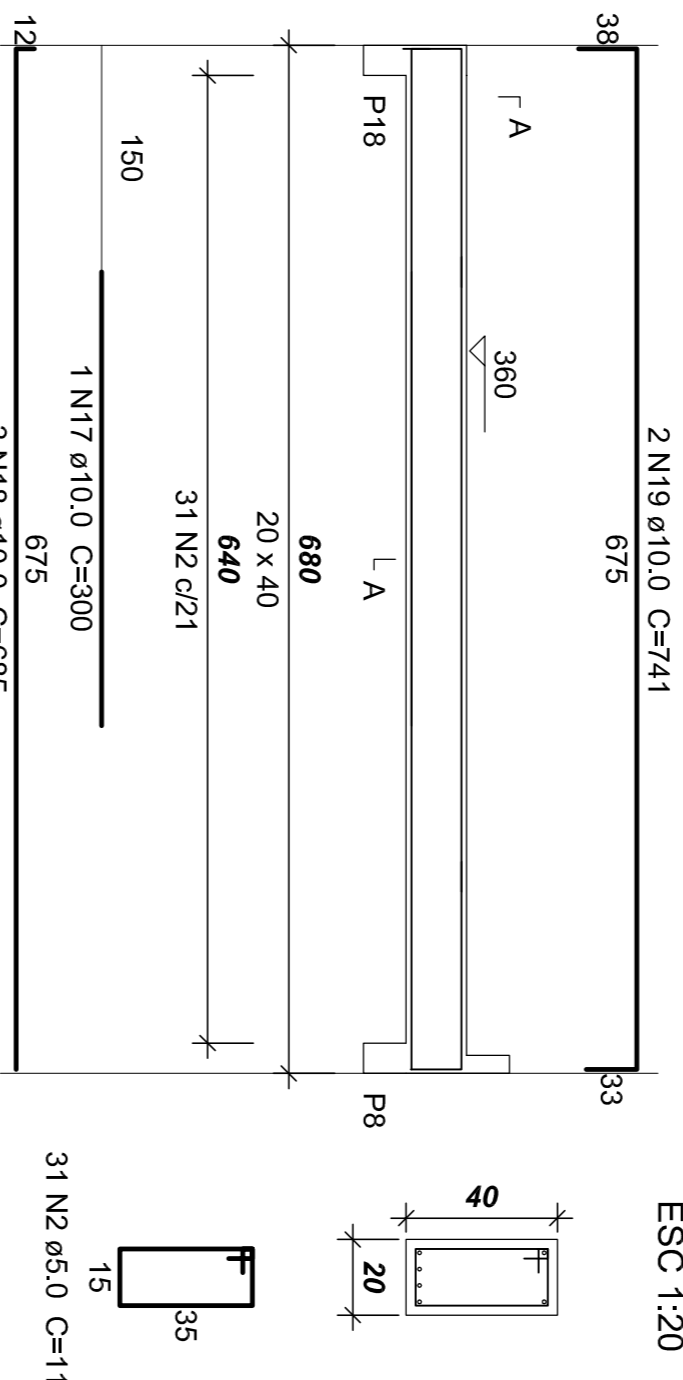
V2 (20 x 53)

1:50

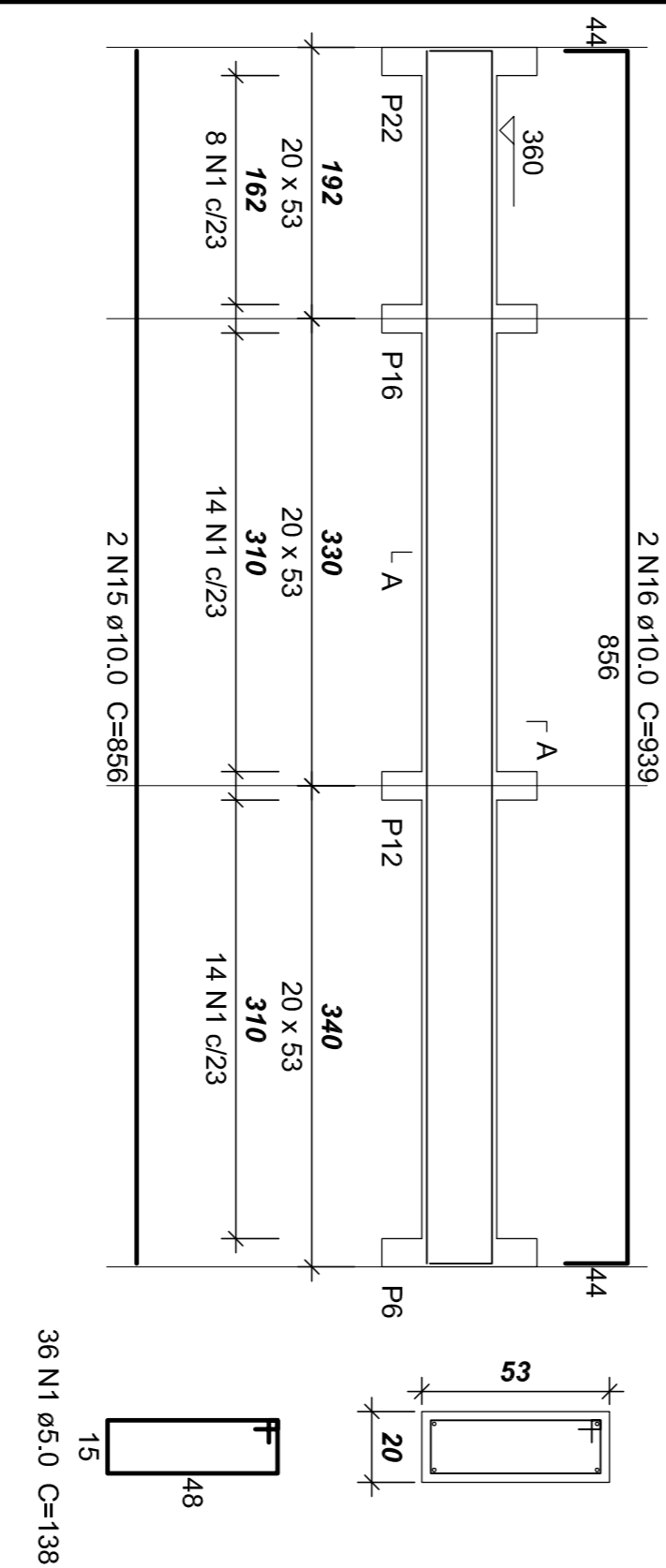


V4 (20 x 40)

1:50

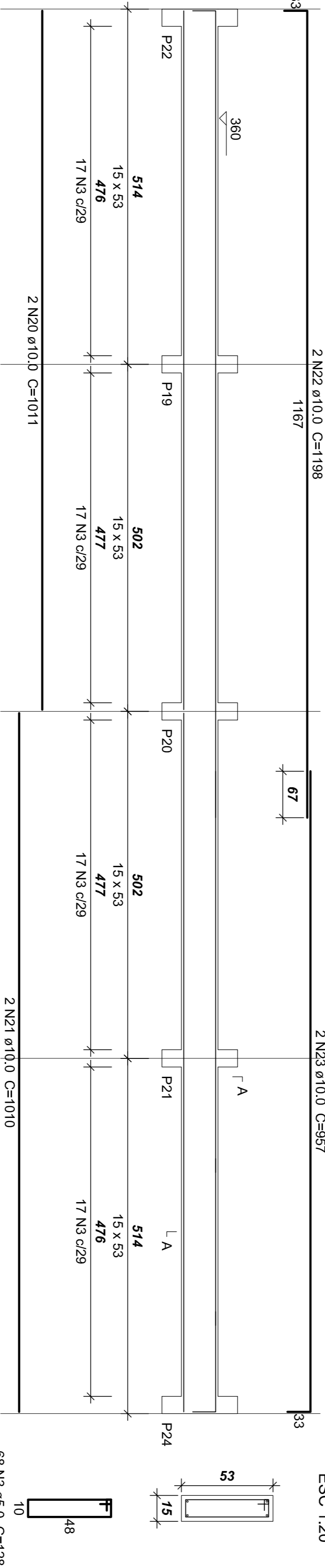

$$V_3(20 \times 53)$$

1:50



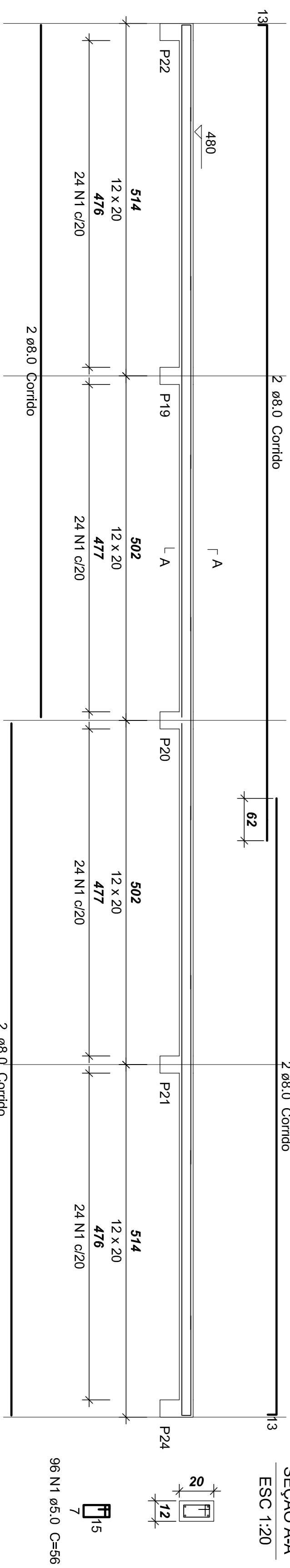
V5 (15 x 53)

1:50



VP (12 x 20)


1:50



Resumo do Aço Vigas Platibanda

AÇO	DIAM	C.TOTAL (m)	PESO (kg)
CA50	8.0	211.4	83.4
CA60	5.0	140	21.6
PESO TOTAL			
CA50	83.4		
CA60	21.6		

Vol. de concreto total (C-20) = 1.25 m³
Área de forma total = 27.18 m²

 <p>AS BUILT PROJETOS</p> <p>Rua Jovino do Rosário, 1564 – Boa Vista CEP: 82500-425 – Curitiba – Paraná</p>		<p>APLICAÇÃO – EDITORA</p> <p>PROVEDOR</p> <p>UNIVERSIDADE DOS VALES DO JEQUITINHONHA E MUCURI – UFMG</p> <p>Endereço</p> <p>RODOVA, MT 367 – Km 55,3, N°5000, ALTO DA JACUBA – DIAMANTINA/MG</p>	
<p>PROJETO ESTRUTURAL</p>		<p>PROPOSTA :</p>	
<p>INTERVENÇÃO:</p> <p>FERRAGEM DAS VIGAS DA COBERTURA</p> <p>FERRAGEM DAS VIGAS DA PLATIBANDA</p>		<p>DETALHE :</p> <p>CARLOS</p> <p>DATA:</p> <p>04/07/2012</p>	
<p>Autor do Projeto :</p> <p>ENG. CIVIL CARLOS HENRIQUE DE S. GONÇALVES</p>		<p>ESCALA :</p> <p>1/17</p>	
<p>DATA :</p> <p>7.982-0/PR</p>		<p>INDICAÇÃO :</p>	